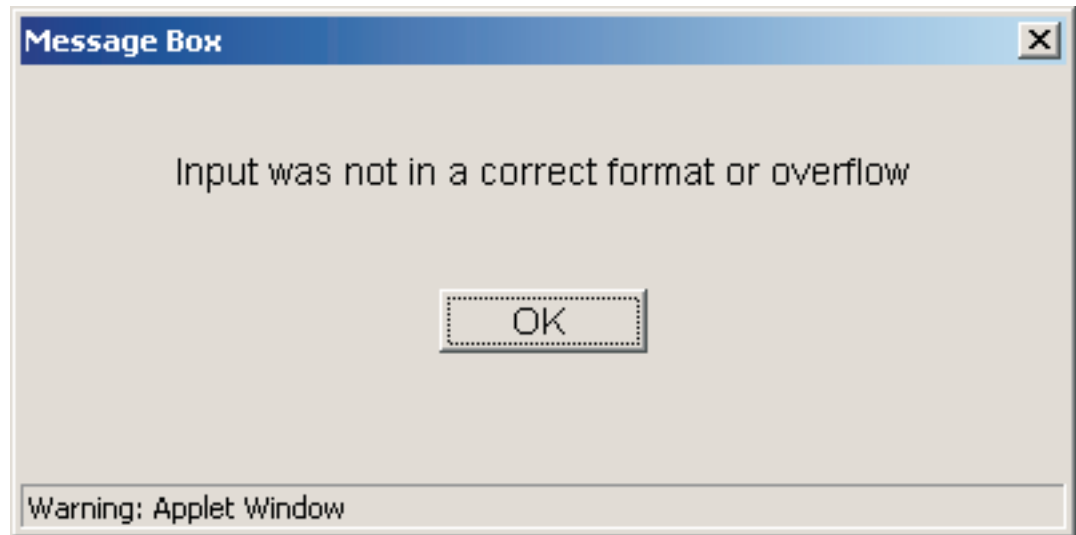


# Unit Conversions

---

## Input Format

Whenever you type an incorrect input number, the software will issue a warning to let you know and the conversion is waiting until you put a correct number.



Following are the common correct and incorrect numbers:

Incorrect	Correct
e2	1e2
e-2	1e-2
2e1.0	2e1
2e-1.0	2e-1
2e1.2	only integer number of exponent
3+1	no expression for a number
	1.2E2 (accepted lower or upper case of e)
	1.2e2 (accepted lower or upper case of e)